



Environment Update

Full Council

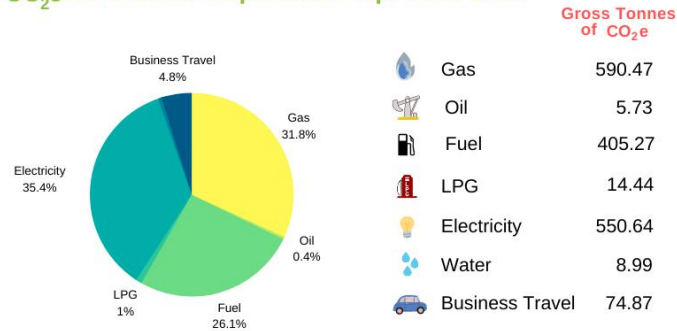
15 Oct 2020



SSDC Carbon Footprint

Last year SSDC recognised a climate emergency and committed to being carbon neutral by 2030. To achieve this we need to know our annual carbon footprint.

CO₂e from SSDC's operations Apr 2018-2019

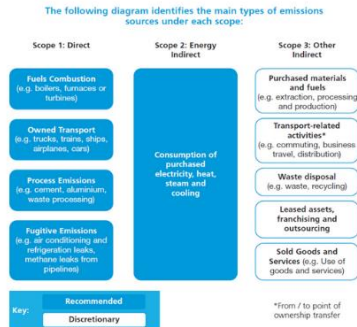


SSDC NET Emissions tCO₂e 2018-2019 = 1,650.42 tonnes

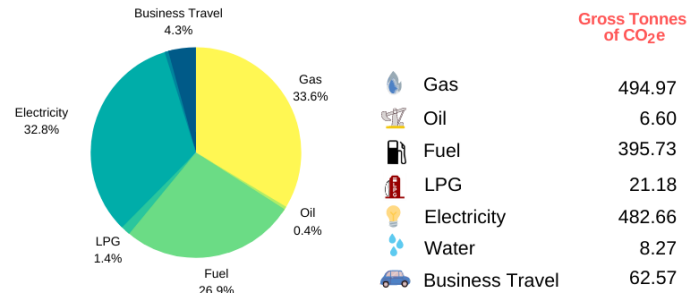
This equates to an average Carbon Intensity of **4.68 tonnes CO₂e per full time member of staff**



This carbon calculator is accounting for Scope 1, 2 and part of scope 3. In future, the embedding of the TOMs (Themes, Outcomes and Measures) Framework will provide and measure social value and enable us to account for some additional Scope 3 calculations to enable products and services to be procured more locally and with less environmental impact.



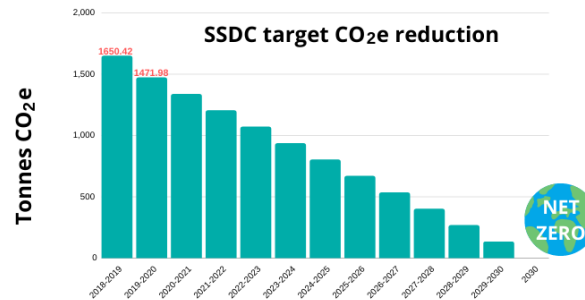
CO₂e from SSDC's operations 2019-2020



SSDC NET Emissions tCO₂e 2019-2020 = 1,471.98 tonnes

This equates to an average Carbon Intensity of **3.94 tonnes CO₂e per full time member of staff**

To be Carbon neutral by 2030 SSDC will have to reduce its emissions by a cumulative average of 10% every year from the 2018-2019 base line data.



In the last financial year 2019 - 2020 we've seen a 10.8% reduction of tCO₂e across SSDC estates.



Energy Audit Next Steps



ENGIE completed an energy audit



Identified options for carbon neutrality across top ten buildings



9-10 year plan



Green Transport



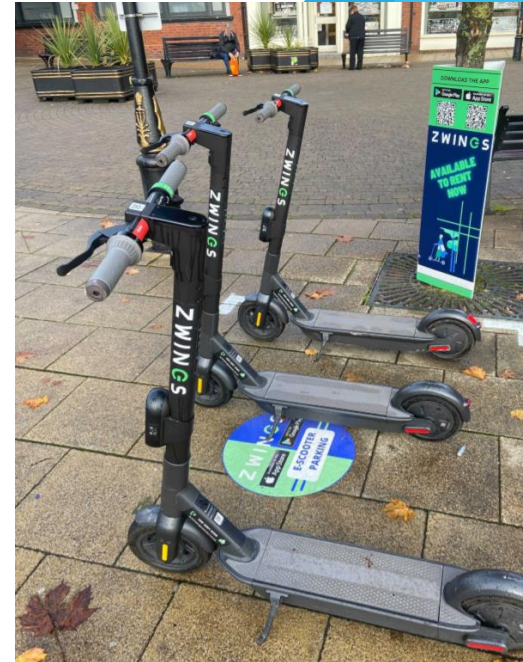
**Electric Vehicle charging
project with Deletti**



Completed by February 2022



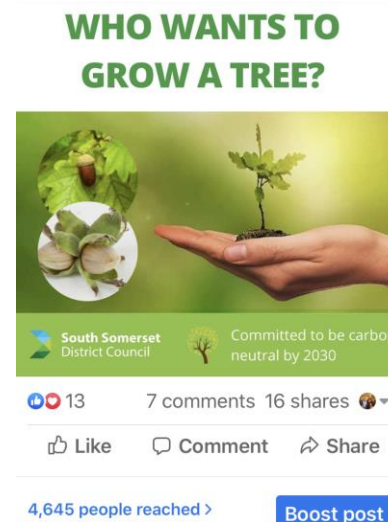
**E Scooter trial with
Zwings October 2020**



Community Engagement



**Communications
plan & social media**



Parish Environment Champions



Get SuSSed monthly newsletter



South Somerset Green Directory



**South Somerset
District Council**



Committed to be
carbon neutral by 2030

Trees and woodland



Great Parish Tree Giveaway



4,000 trees planted across our estate last winter



Urban Tree Challenge



Wyndham Hill Yeovil



Open Spaces Strategy



Resilient, Healthy, Liveable



“by 2030 South Somerset will be recognised for the high quality and accessibility of its excellent open spaces, championing biodiversity and community resilience, promoting economic prosperity and healthy lifestyles”



Joint Working



Wide range of partners



Reimagining the Levels, Somerset Wildlife Trust, the Local Nature Partnership, Somerset County Council and the Area of Outstanding Natural Beauty teams.



Centre for Sustainable Energy

